

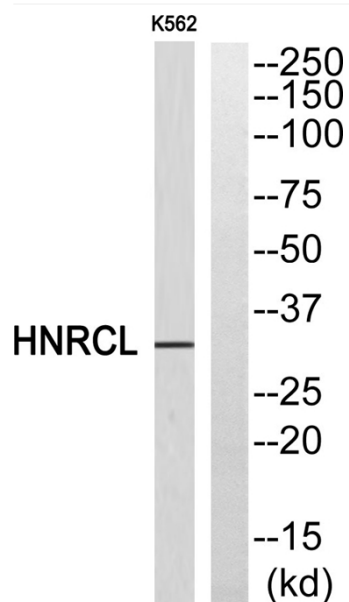


hnRNP CL1 Polyclonal Antibody

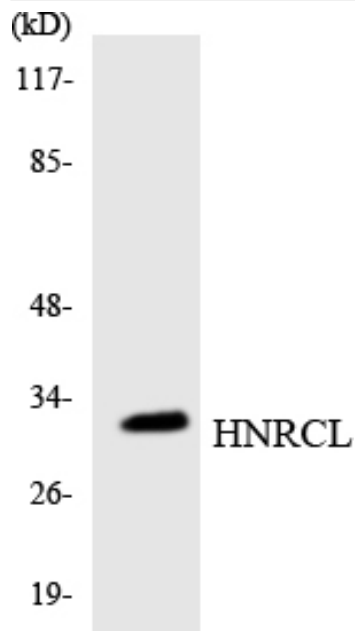
Catalog No	YP-Ab-01802
Isotype	IgG
Reactivity	Human;Rat;Mouse;
Applications	WB;ELISA
Gene Name	HNRNPCL1
Protein Name	Heterogeneous nuclear ribonucleoprotein C-like 1
Immunogen	The antiserum was produced against synthesized peptide derived from human HNRCL. AA range:31-80
Specificity	hnRNP CL1 Polyclonal Antibody detects endogenous levels of hnRNP CL1 protein.
Formulation	Liquid in PBS containing 50% glycerol, 0.5% BSA and 0.02% sodium azide.
Source	Polyclonal, Rabbit,IgG
Purification	The antibody was affinity-purified from rabbit antiserum by affinity-chromatography using epitope-specific immunogen.
Dilution	Western Blot: 1/500 - 1/2000. ELISA: 1/20000. Not yet tested in other applications.
Concentration	1 mg/ml
Purity	≥90%
Storage Stability	-20°C/1 year
Synonyms	HNRNPCL1; HNRPCL1; Heterogeneous nuclear ribonucleoprotein C-like 1; hnRNP C-like-1; hnRNP core protein C-like 1
Observed Band	32kD
Cell Pathway	Nucleus . Component of ribonucleosomes. .
Tissue Specificity	Pooled,Uterus,
Function	function:May play a role in nucleosome assembly by neutralizing basic proteins such as A and B core hnRNPs.,similarity:Belongs to the RRM HNRPC family. RALY subfamily.,similarity:Contains 1 RRM (RNA recognition motif) domain.,subcellular location:Component of ribonucleosomes.,
Background	function:May play a role in nucleosome assembly by neutralizing basic proteins such as A and B core hnRNPs.,similarity:Belongs to the RRM HNRPC family. RALY subfamily.,similarity:Contains 1 RRM (RNA recognition motif) domain.,subcellular location:Component of ribonucleosomes.,
matters needing attention	Avoid repeated freezing and thawing!

**Usage suggestions**

This product can be used in immunological reaction related experiments. For more information, please consult technical personnel.

Products Images

Western blot analysis of HNRCL Antibody. The lane on the right is blocked with the HNRCL peptide.



Western blot analysis of the lysates from RAW264.7 cells using HNRCL antibody.